



2018 ! 41 " # \$ % & ' ( ) \* + , - . / 0 1 2

世联点评

2018 < = 41 4(10 @ 8 A-10 @ 14 A) 7 8 B+ 7 C D % E F G H E F I J K 24.5 L M G N 7 6 C K O P Q % E F G N R 1 C K S T Q % E F U 7 8 B+ 4 C D % V W G H V W I J K 3.33 L M G N 7 3 C K O P Q % V W G N R 1 C K X T Q % V W U

2018 < = 41 4(10 @ 8 A-10 @ 14 A) 7 8 Y 2 B+ 4 Z [ \ ] ^ O P \_ ` 7 7 1 a U 7 8 b c S d e B f g 2 3 7 6 a G h i j k 2.99 % G f g l J K 18.32 L I m G h i j k 24.13 % U b c S d e n O P o S p o q r s t u K 8 7 7 9 . 3 7 v / l m G h i j k 1.78 % U

w 4 B % 2 3 x K y z G B + 7 C D % { | G N 7 + 6 C K O P Q % E F } V W ~ I G B + 4 C D % V W G N 7 + 3 C K O P Q % V W U w 4 B + 4 Z [ \ ] ^ B 7 7 1 a O P } w 4 f ~ I G b c S d e f ! + " # j k G V W ! 2 3 7 6 a G V W t u + 1 j k G w 4 S d e V W t u 8 7 7 9 . 3 7 v / M G a t l J g 7 7 M U \$ % & ' ( G f g l ) \* + r , - . / + O o 1 % o 2 & U



3 4 \$ % & ' ( )

1 4 \$ % 5 6

2018 < = 41 4(10 @ 8 A-10 @ 14 A) 7 8 B+ 7 C D % E F G H E F I J K 24.5 L M G N 7 6 C K O P Q % E F G N R 1 C K S T Q % E F U

2018 ! 41 " 7 8 , % 9 : ; \$ % 5 6 3 < =

> ?	@A BCDEF	GH	%I	%J KO BCLF	M@ BCDEF	N/%@OBL /OF	POQR
W20-18-0066	5.9411	3%OPQ%	7822&4567 &	96245.66	17.8233	5400.00	2018/11/8
W10-18-0045	2.6799	3%OPQ%	7821%%89:	40199.10	8.0398	5000.00	2018/11/14
W10-18-0043	2.1902	3%OPQ%	7821%%89:	32852.85	6.5706	5000.00	2018/11/14
W10-18-0044	1.0115	3%OPQ%	7821%%89:	15172.05	3.0344	5000.00	2018/11/14
W10-18-0042	3.0694	3%OPQ%	7821%%89:	46,041	9.2082	5000.00	2018/11/14
W04-18-0033	0.5691	ST	782+; %<=> :	5975.45	2.8455	2100.00	2018/11/15
W15-18-0053	9.0501	3%OPQ%	78?@AB&CD EF]GHI	149325.83	27.1502	5500.00	2018/11/15

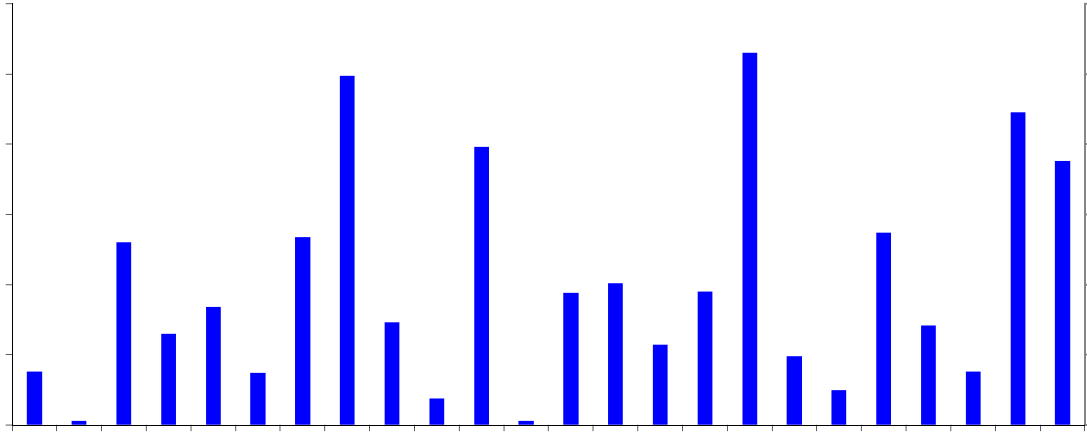
> J K ' L M " # J K I N ?





2018 < = 41 4 (10 @ 8 A-10 @ 14 A) 7 8 b c S d e P f a 2376 a G h i j k 2.99% G f g l J K 18.32  
L I m G h i j k 24.13% U





>JK' LM" #JKI N?

2018 < = 41 4(10 @ 8 A-10 @ 14 A)7 8 Sde [ \ - . n / O 1 s M

2018 7 8! 41 " (10.8-10.14F* +, wxyz e { f t u B   } - . ~ { f F							
{ f	! j	xyfg	" #	@ABCOF	~ B\$LF	vOBL/D EF	" v@A BOF
1	%&	' ( ) : *	119	1.151727	1.072812	9314.81	96.78
2	+!	, - . /	188	1.691242	0.867896	5131.71	89.96
3	O1	2345	49	0.459363	0.601744	13099.52	93.75
4	67	89: ; 5	23	0.471962	0.529975	11229.19	205.20
5		8@ >	3	0	0.482543	11110.27	1
6	Fj		60	0.723814	0.446143	6163.78	120.64
7		. ml 8J ; 5	46	0.431916	0.427526	9898.37	93.89
8	8	' ( ) LM* TNj /OP 8; 5B' ( 8E	38	0.378683	0.400762	10583.04	99.65
9			45	0.47664	0.395118	8289.66	105.92
10			47	0.387518	0.391651	10106.65	82.45
11	23	j 4" 56(	25		0.36397	20683.98	70.39
12	1%	78i j	26		0.349948	10432.53	129.02
13	1%	9o: (	26		0.296934	9719.88	117.50
14	2&	; < 45i j	17	0.191994	0.28196	14685.87	112.94
15	=k	> ? @di j	25	0.281508	0.269113	9559.70	112.60
16	2&	j hi j	22	0.260677	0.264343	10140.63	118.49





" #Vkl 1993<G/hmno\$pe%&qTrs, tuvWU2007<G" #xyz{GVk !" #%&' () \* +, -  
. U2009<8@28AG" #| !} ~W 1V! " #j 2GVK\$\_%&A), e%&' Qtu(ESU

) 20<, B\* G" #VKYh+, e%&tu(ESG, 15000. -XGK. 2L\_ABS(EqT, /O1z2'(rst  
uGK 600LZ\_(345T6782014<G" #9: s 8.2; , VW1GVKhm1zO` 1\$<3000; , e%&tuSG| 14  
Z=>32O` 1?@, A; GB923\* 1 4.5%, CDEFGH%&tu\$TU

2014<G" #IJK. KF !" #%\$&' () \* +, - . IGLMF" # \$I U" # \$NI OPuQGRSTU&tud#  
, U+VJGWXY SZ{ [7he%&23B\*, tu\! GV-. ] b^\_-' , TuabVcdTuWefQ, bgJtu  
lN,hkNI !JKYi [ ^# , 5Tj tukl o" #mn^# OfI NGabo' (oOf oxypc[TuKby, tu  
l NUKOP(EbgJol N oWeW^J, TU&e%&tunqr' (oU&yzoO` oOf osuptus8

!" #%\$&' () \* +, - .  
! 2tu& O=: 2028v  
tuSu7> 14w  
xyM0755-2216 2800  
z{ M0755-2216 2900  
| } M518001

! 2" #e%&) 5+, - .  
! 2tu& O=: 5047v  
! B\* ~\$! 10w  
xyM0755-2216 2666  
z{ M0755-2216 2902  
| } M518001

d! 2" #e%&rs+, - .  
d! 2s\&b" ] 3l #:  
dxl #d3B\$ 11w  
xyM020-38972777  
z{ M020-3879 9392  
| } M510620

%8" #e%&' (+, - .  
%82&3&' 9(:  
) \* &Tj 7vw 301  
xyM0757-8314 1993  
z{ M0757-8314 1980  
| } M528000

" #e%&rsn+! s+, - .  
+! 2+3&" >, " D:  
k\hi 7> 21w11 -  
xyM0752-281 7800  
z{ M0752-278 0566  
| } M516000

bo" #e%&rs+, - .  
bo2. M&OI >: 32v V12 B ) \* &Tj 5529  
xyM0756-332 0500  
z{ M0756-332 0700  
| } M519000

/` " #OTe%&' (+, - .  
/` B17: D2 80v  
3shi 4k! 3605v  
xyM0731-8823 2555  
z{ M0731-8823 0909  
| } M410005

5a" #} 6e%&) 5+, - .  
#O75a2N9&+ 28  
9#d3A: 14;  
xyM0871-3626539  
z{ M0871-3615052

<! " #OTe%&rs+, - .  
<! 2O%&O%: 226v  
=>hi 19w 1910 -  
xyM0371-8614 3608  
z{ M0371-8614 3609  
| } M450002

?@" #e%&rsO

TD 00 TD



