



50

·
12.10-12.16

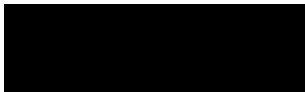


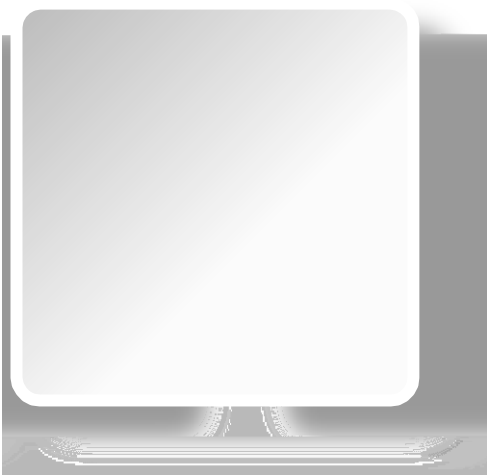
1.

2.

3.

4.





11

2018-2019

:





2018-2019

2018 12 12





:



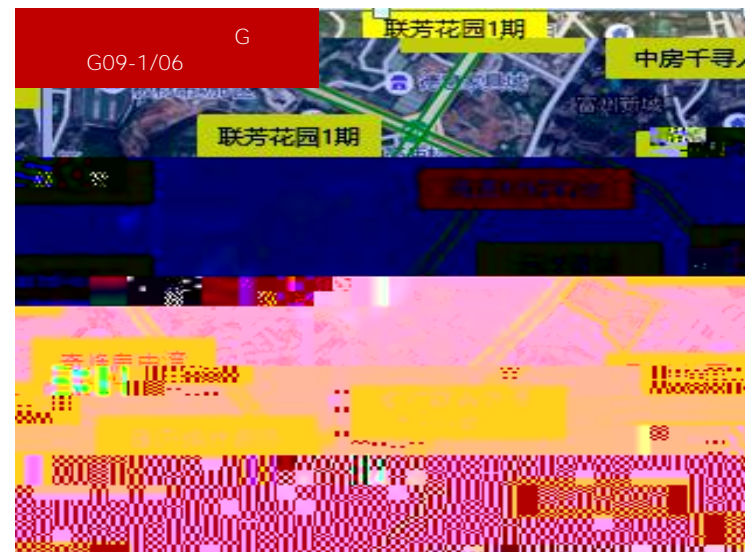
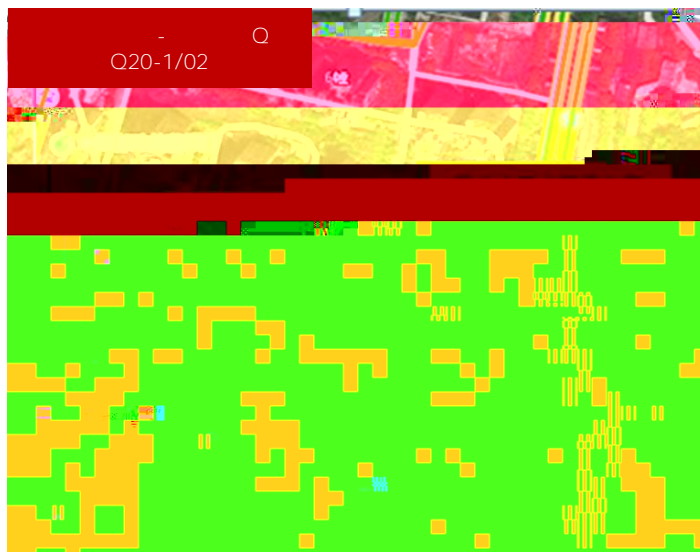
2

148.4

2

254.9

					()	()		()	(/)	(/)	()	
12-12	- Q Q20-1/02			-	6	90.1		7.4	823.4	4117	18	3
12-12	G G09- 1/06				3.9	58.3		6.8	1167	7002	9.7	2.5





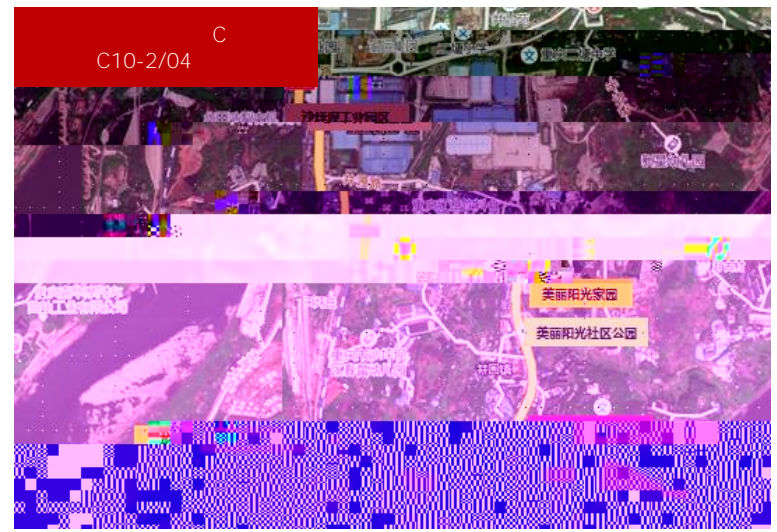
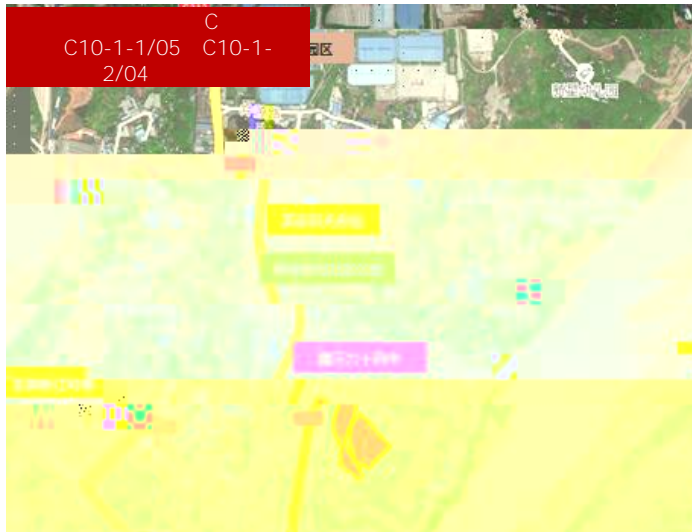
4

280.6

2

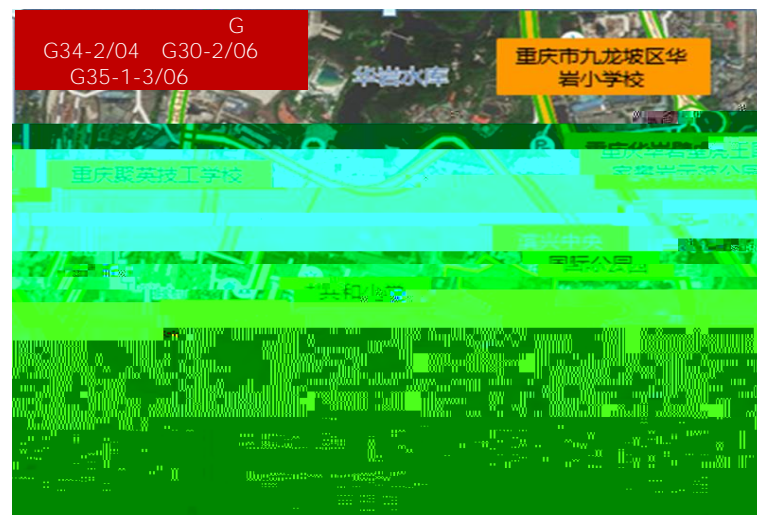
254.9

					()	()		() (/)	(/)	()		
12-14	C C10- 1-1/05 C10-1-2/04				6.2	92.8		6.2	666.6	4000	15.5	2.5
12-14	C C10- 2/04				2.7	39.8		2.6	666.6	4000	6.6	2.5





				()	()	()	(/)	()		()	(/)		
12-10	F	F64-3/05		6.2	96.7		4.7	4526	9.7	1.5	4.4	4526	
12-12	G	G34-2/04 G30-2/06 G35-1-3/06		6.2	158.2		5.7	4598	12.4	2	5.7	4598	+





	67.85	41.89
12252 /	2.3%	18%
	19%	23.8%
14.5%		
	11656 /	0.14%





				19%		18%		
	13			13.2	1024		261	2.5
	125	1.6		80	1.9	79	1.8	
	4		12	1345			945	8.1
336	3.4				3		10.8	417
	92	8		241	1.6			



			()	(/)
1		945	8.2	8670
2		529	1.7	14441
3		369	3.6	6933
4		360	3.1	9075
5		336	3.4	10016
6		261	2.5	15824
7		241	1.6	15479
8		218	1.6	58272
9		208	1.9	13674
10		193	2.0	10632 100
11		945	8.2	8670
12		529		





			23.8%		14.5%			
	56		10	1193		186	1.6	
	125	1.2		54	0.5			
	20		6	679		255	2.2	152
1.4			33		6	716	14%	242
1.9			63	0.6				
"	"		21.82			52%		

0 Ž



			()	(/)
1		255	2.2	10494
2		242	1.9	12005
3		186	1.6	9075
4		152	1.4	8670
5		125	1.2	8929
6		110	0.6	13719
7		89	0.4	3703
8		88	0.3	14412
9		81	0.3	5184
10		76	0.8	14192
11		255	2.2	10494
12		242	1.9	12005
13		186	1.6	9075
14		152	1.4	8670
15		125	1.2	8929





23790 /

30.31% 5

118.65%

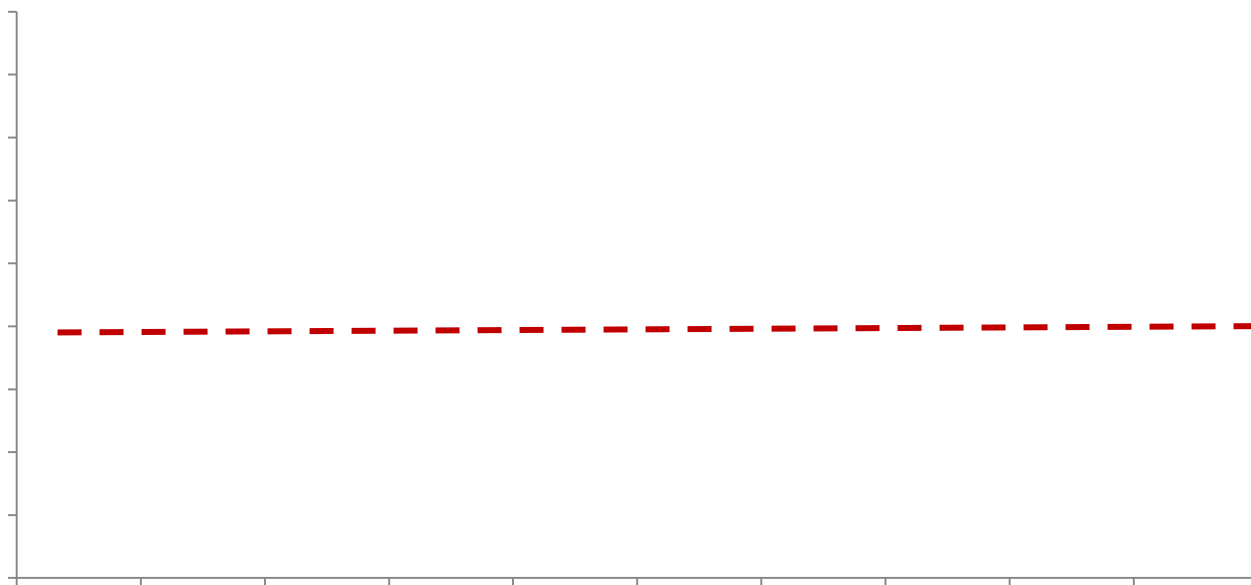
38199 /

6582

34.79%

5607 /

5201



23790



53.91%

10

2547

1373



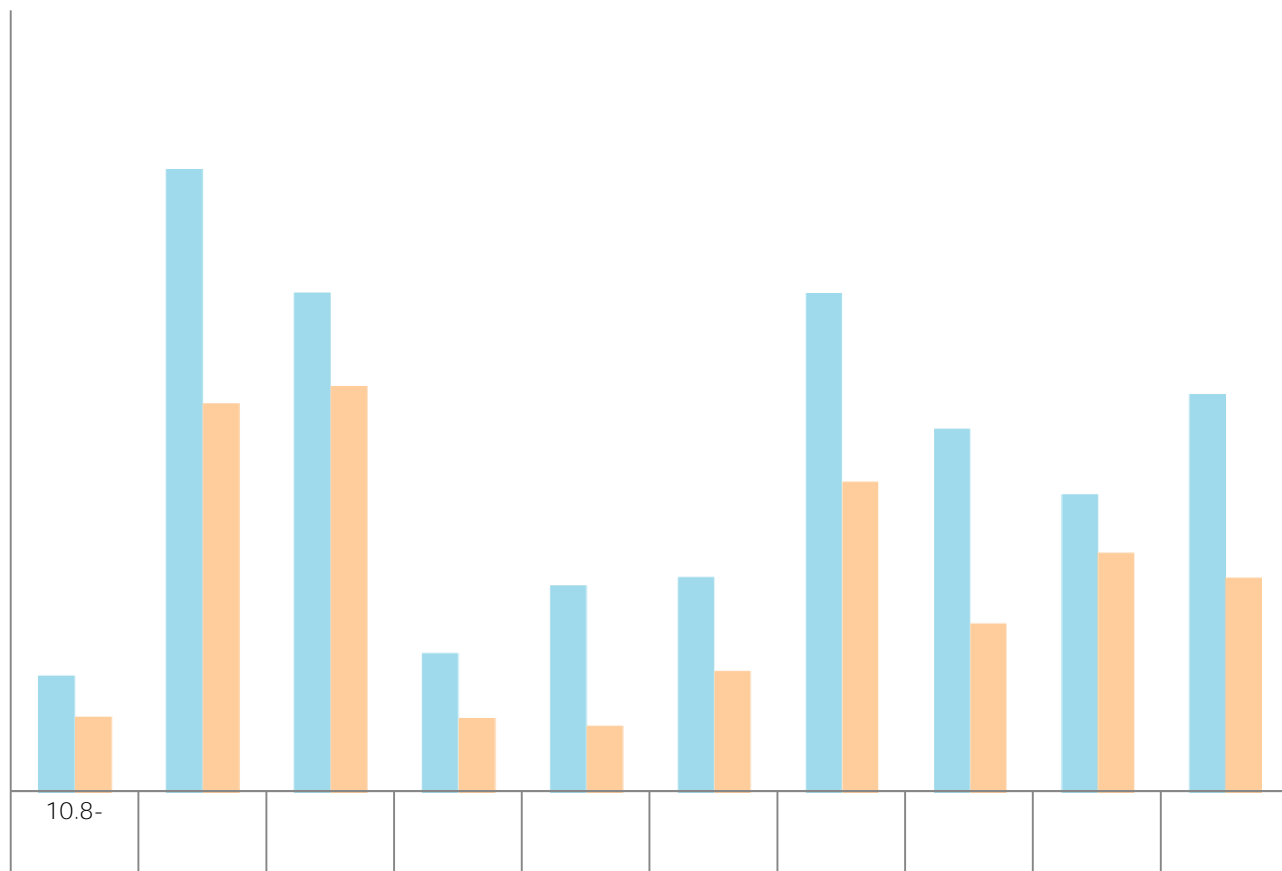


10

2547

1373

53.91%





							%			/	/		
12.15			7-3#		56	39	70%	74-99	9.9	9.7	15873	15242	12.15
12.14			2/4/7/ 88/89#		874	838	96%	72-131			12802	12802	12.14
12.14			94/95#		64	17	27%	190-212			19542	19542	12.14
12.14			10#		197	110	56%	74-120			8600	8600	12.14
12.14			9#		300	30	10%	94-102			9600	9600	12.14
12.13			15#		204	35	17%	88-99			9800	9800	12.13
12.15			11#		150	120	80%	103-150	99 99		12616	12616	12.15
12.14			5#		320	121	38%	75-93			9400	9400	12.14
12.11			D8#		32	7	22%	110			9000	9000	12.11
12.15			7 11#		350	56	16%	87-109	99 98		7#7100 11#670 0		12.15

